

Installation dimensions and specifications

Specifications	SW-1320/D	SW-1520/D	SW-1320/DHG
Basket diameter (mm)	1320	1520	1247
Basket Angle	30°	30°	27°
Basket speed, Max (rpm)	2000	1800	2000
Max. Purging Force (G)	2951	2753	2788
Screen Area (m2)	2.07	2.96	1.97
Housing diameter (mm)	2015	2215	2015
Housing height (mm)	1250	1422	1250
Power (kW/HP)	90 / 120	132 / 180	90 / 120
Center distance between centrifugals (mm)	2350	2550	2350

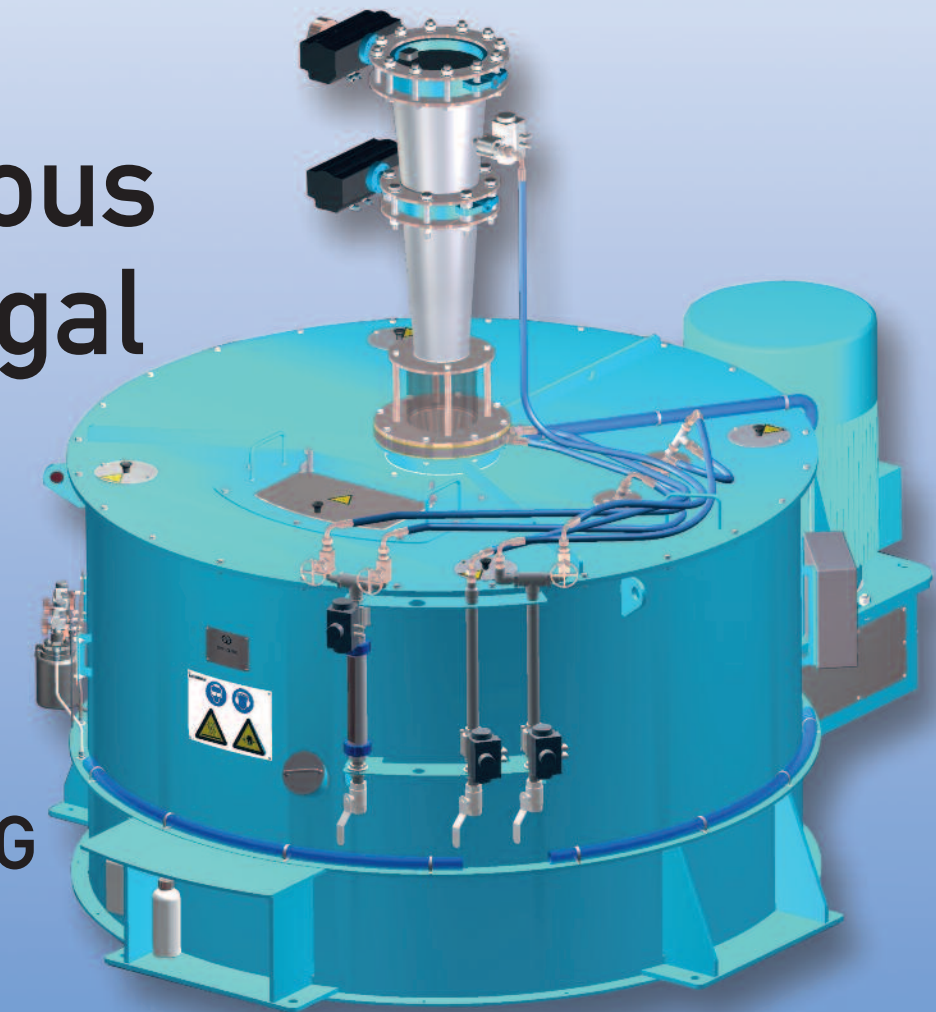
Average capacities

	SW-1320/D	SW-1520/D	SW-1320/DHG
A-massequite (t/h)	20-45	27-60	35-70
B-massequite (t/h)	15-32	20-45	25-50
C-massequite (t/h)	12-18	16-25	n/a
C-aff massequite (t/h)	18-40	24-55	n/a

Note: The above numbers are based upon average capacities. Actual capacity may vary depending upon local conditions and end product desired.

Continuous Centrifugal

SW-1320/D
SW-1520/D
SW-1320/DHG



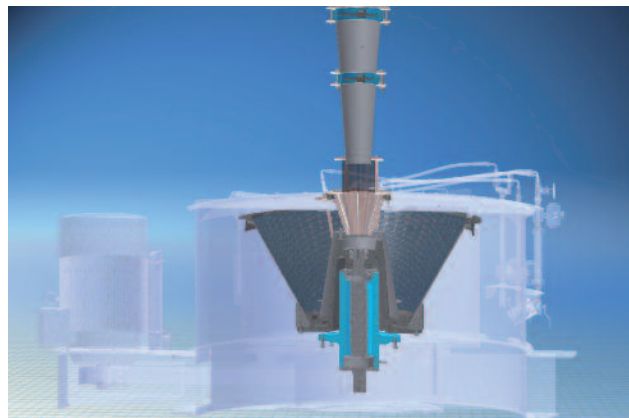
- enclosed inlet with silvortex heater
- multistep massequite distribution
- duplex ss basket
- unique basket flange design
- long life bearing system
- low stress belt drive
- common basket and syrup casing suspension

SILVER WEIBULL SWEDEN AB

INDUSTRIGATAN 15, S-281 43 HÄSSLEHOLM, SWEDEN

PHONE: +46 451 38 48 00 FAX: +46 451 158 81 E-MAIL: info@silver-weibull.se

www.silver-weibull.se



Masecuite Feeding System

FEATURES:

1. Sight glass
2. Silvortex heater
3. Feed cup on top of bearing system
4. Deep bell
5. Butterfly control valve
6. Profiled screen clamp ring



Sugar Discharge from Basket

FEATURES:

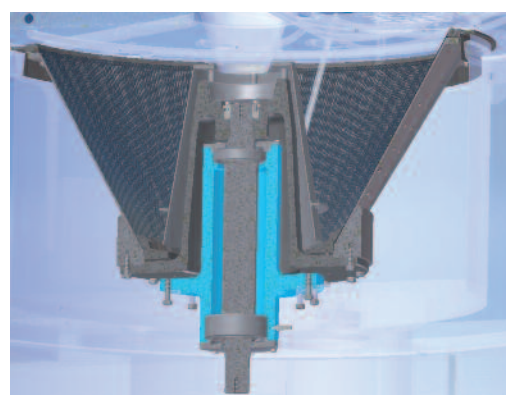
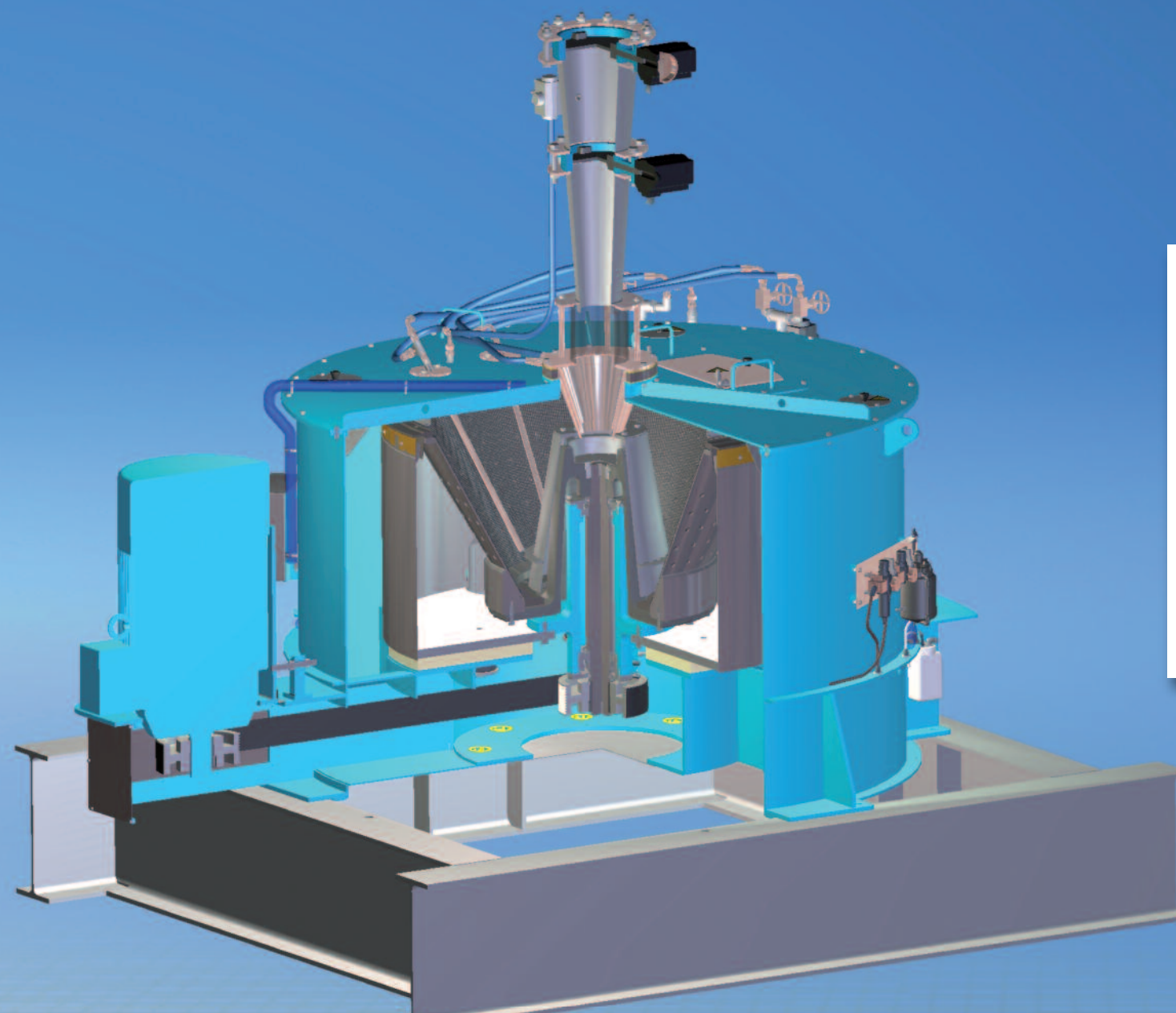
1. Unique basket flange
2. Crystal deflector

BENEFITS:

1. The crystals leave the flange at the flange inner radius which gives lowest crystal speed: - Minimum crystal damage - Minimum energy loss
2. No crystal built up in the monitor casing and no wear of the casing wall

SW-1320/D ENERGY CONSERVATION:

- TOTALLY ENCLOSED INLET - No acceleration of air in the basket
- UNIQUE BASKET FLANGE - Crystals leave flange at inner radius
- EFFECTIVE EARLY SYRUP EVACUATION - Many big filter holes in basket



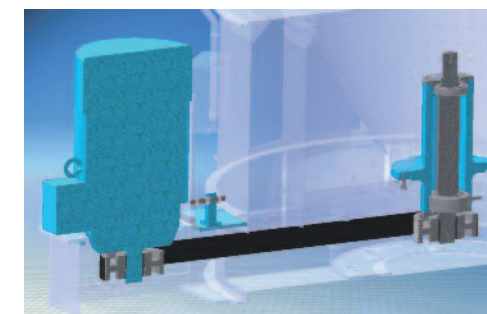
Bearing System with Belt Pulley

FEATURES:

1. Heavy dimensioned bearing system
2. Long distance between bearings
3. Oil mist lubrication
4. Bearing status sensor for lower bearing
5. Basket CG below upper bearing

BENEFITS:

1. Very long service life
2. Strong and stiff suspension of the basket
3. Over pressure in bearing house, cooling effect and effective lubrication
4. Easy to check bearing status without dismantling
5. Highest stability of basket

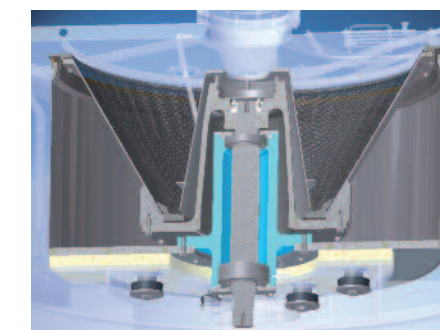


Drive System

FEATURES:

1. Poly V drive belts
2. Drive motor mounted on bracket
3. Taper Lock pulley bushings

Syrup Casing and Rubber Mounts



FEATURES:

1. Unique geometry of the syrup deflector at basket shroud
2. Filler pad under syrup casing
3. Symmetrically placed rubber mounts
4. Shell and deflector in stainless steel



Wash System

FEATURES:

1. Complete delivery including flow meter, control valves, hoses etc

OPTIONS:

1. Automatic shut off ball valves
2. Affination media system with flow meter etc