

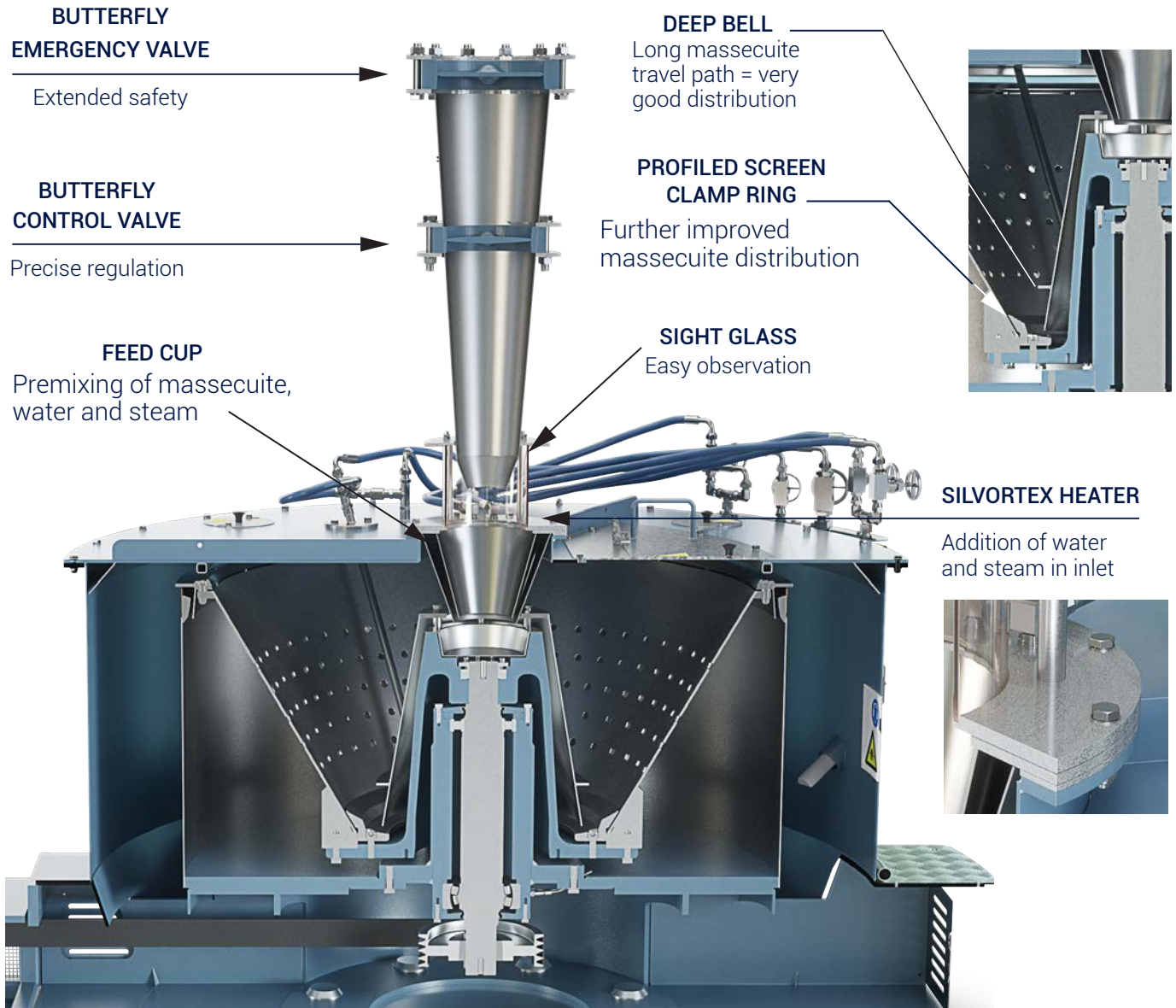
CONTINUOUS CENTRIFUGAL DX

-excellent running, quality and stability

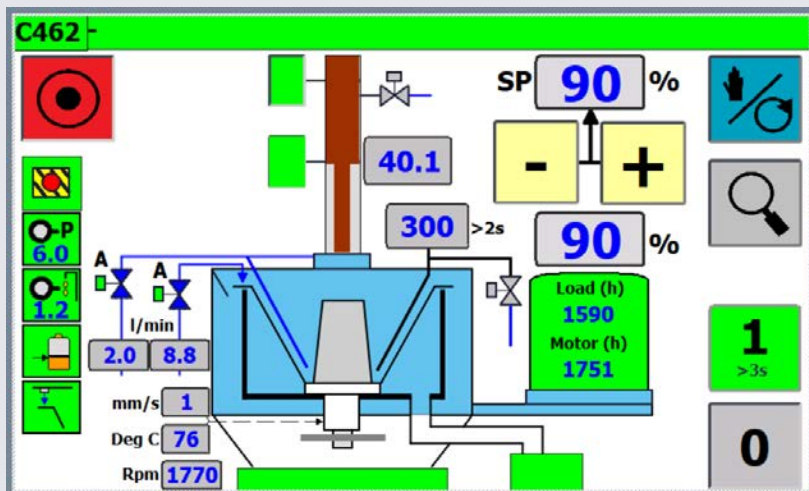


SILVER WEIBULL®

MASSECUITE FEED AND DISTRIBUTION SYSTEM



OPERATOR CONTROL PANEL



FEATURES

Centrifugal operations, manual/automatic mode
Fault tracing
Parameter settings
Indication of functions

Real time information:

1. Vibration mm/s
2. Bearing temperature °C
3. Basket speed rpm
4. Water consumption l/min
5. Motor load %
6. Feed valve opening %

SUGAR DISCHARGE FROM BASKET



UNIQUE GEOMETRY OF THE SYRUP DEFLECTOR

Positive sealing due to cyclon effect between the shroud and deflector

CRYSTAL DEFLECTOR

No crystal build up in monitor casing.

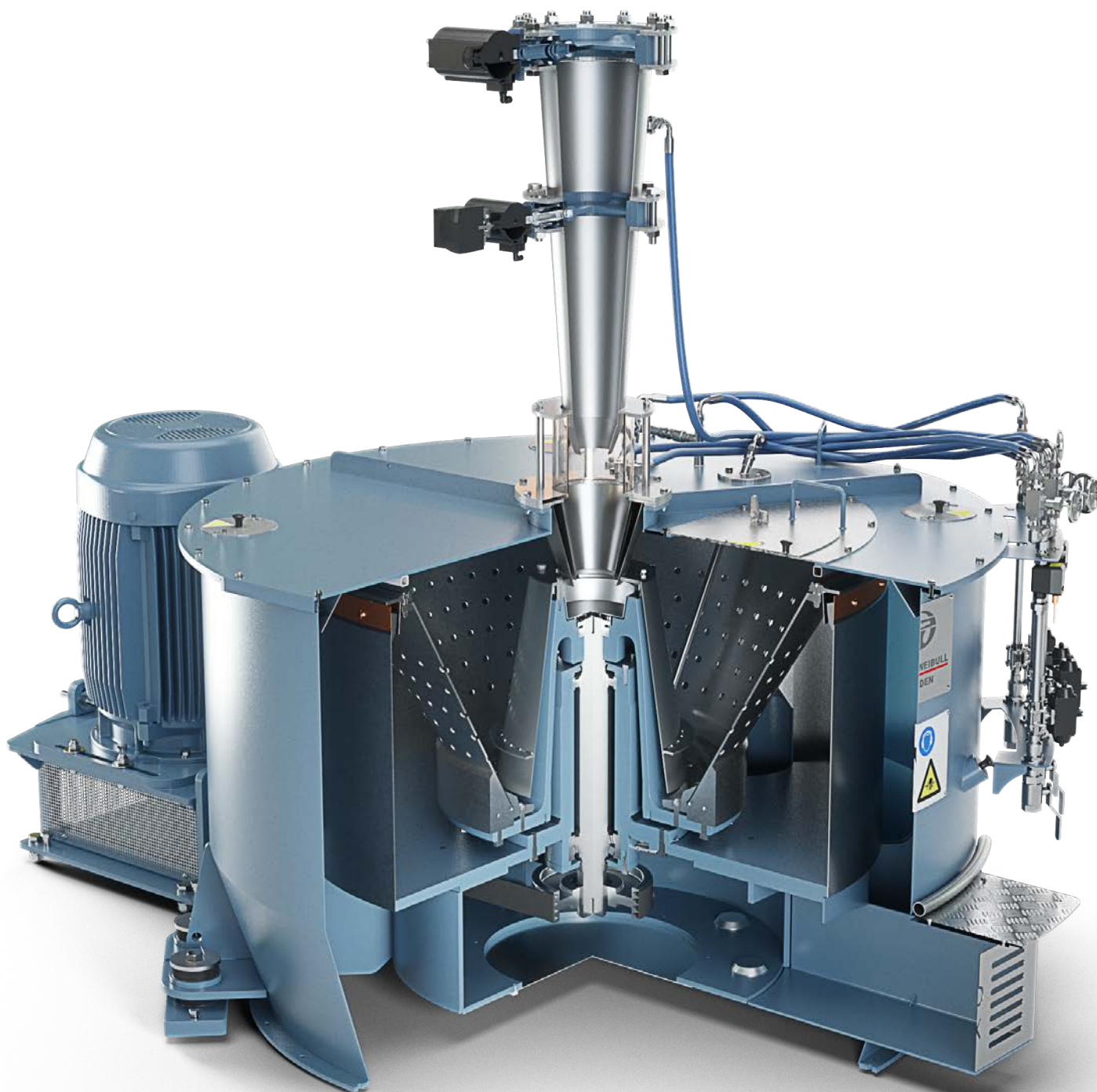
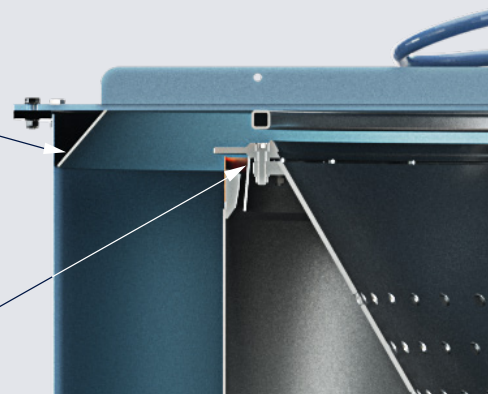
No wear of the casing wall

UNIQUE BASKET FLANGE

Crystals leave the flange at inner radius = lowest speed.

Minimum crystal damage

Minimum energy loss



LONG LIFE BEARING SYSTEM

LONG DISTANCE BETWEEN BEARINGS

Strong and rigid basket suspension

HEAVY DIMENSIONED BEARING SYSTEM

Very long service life

BASKET C. G. BELOW UPPER BEARING

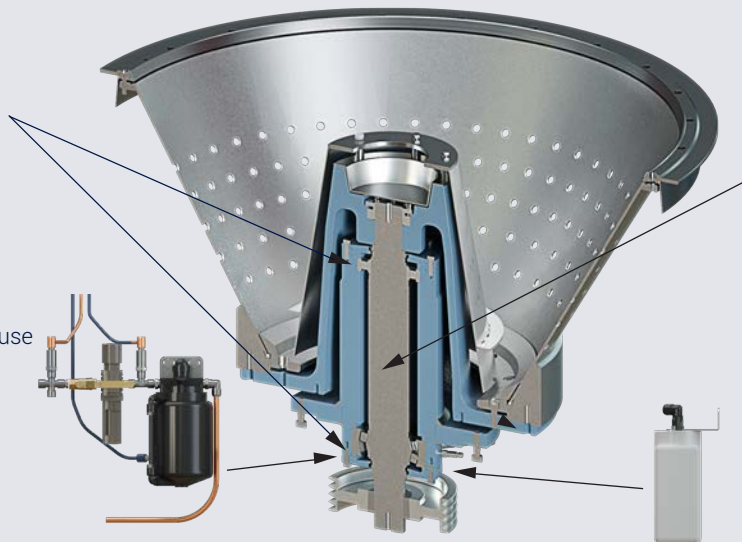
Highest stability of the basket

OIL MIST LUBRICATION

Over pressure in bearing house
Cooling effect
Effective lubrication
Keep dust and vapour out

STANDARD BEARING STATUS, VIBRATION & TEMPERATURE SENSORS

Measure bearing condition
easy to check bearing status with hand hold instrument
Measure centrifugal vibration
Measure bearing temperature



DRIVE SYSTEM

MOTOR MOUNTED ON SEPARATE FRAME

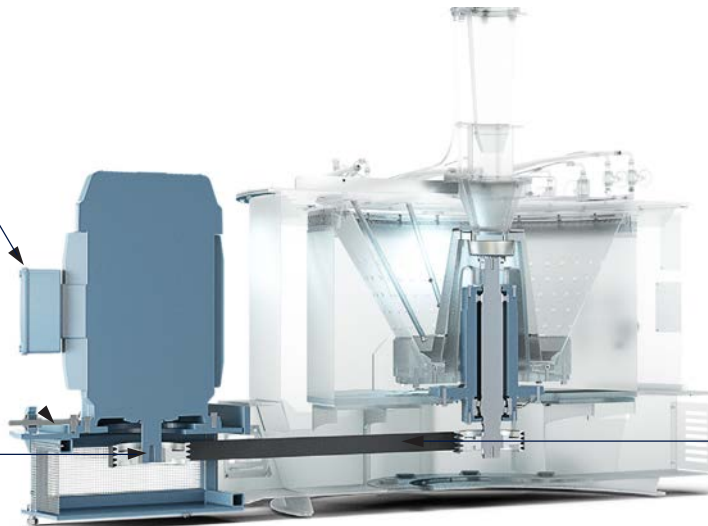
Easy adjustment of belt tension

TAPER LOCK PULLEY BUSHINGS

Easy mounting and adjustment of pulley and belt

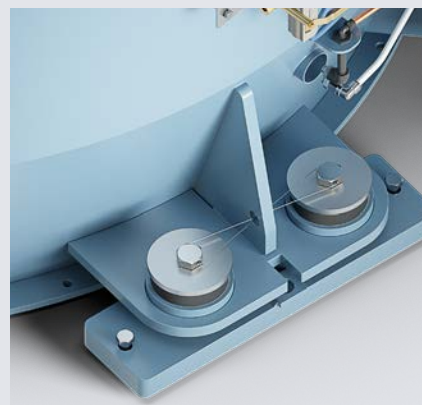
POWER BAND DRIVE BELTS

High capacity transmission with low belt tension



WASHSYSTEM

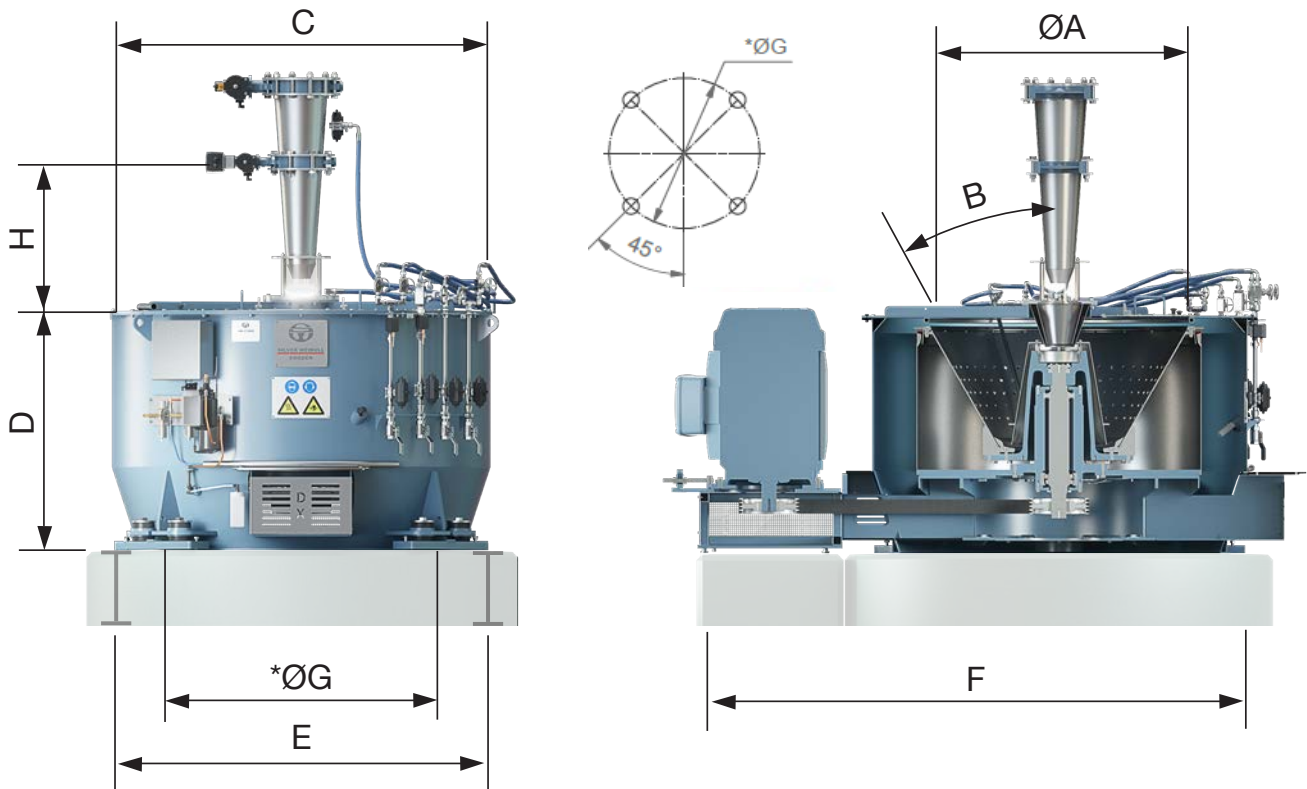
Complete delivery including digital flow meter, control valves and braided hoses.
Options; Affination media system with digital flow meter. Automatic wash media adjustment.



VIBRATION DAMPERS

Vibration dampers symmetrically placed for highest stability.
Easy access for maintenance and replacement.

DIMENSIONS MODEL DX, DX/HG



Model	A (mm)	B (°)	C (mm)	D (mm)	E,G (mm)	F (mm)	H (mm)	Screen area (m ²)	Max speed (rpm)	Max purging force (G)	Power (kW/HP)
SW-1120 DX	1120	30	1720	1110	1800	2600	1265	1,48	2100	2761	55/74
SW-1320 DX	1320	30	1940	1185	2000	2795	1190	2,07	2000	2951	90/121
SW-1120 DX/HG	1049	27	1720	1110	1800	2600	1265	1,37	2100	2598	55/74
SW-1320 DX/HG	1247	27	1940	1185	2000	2795	1190	1,97	2000	2788	90/121

Model	Average Capacities			
	A-massecuite (t/h)	B-massecuite (t/h)	C-massecuite (t/h)	C-aff massecuite (t/h)
SW-1120 DX	20-35	15-25	10-15	15-25
SW-1320 DX	25-45	20-35	15-20	20-40
SW-1120 DX/HG	25-40	20-30	n/a	n/a
SW-1320 DX/HG	35-70	25-50	n/a	n/a

Note: The above numbers are based upon average capacities.
Actual capacity may vary depending upon local conditions and product desired.

More info on www.silver-weibull.se



Silver Weibull is working with a company adapted quality management and environment system. The system is implemented in our daily business in order to maintain a high quality level, to minimize our waste and environmental impact.

REFURBISHMENT OLD TRADE NAMES

Silver Weibull also refurbishes older versions of Batch and Continuous centrifuges.

We can replace and repair worn or broken equipment, control panels and other electrical parts for old trade names as ASEA, ASEA-Landsverk, ASEA-Weibull, Nils-Weibull, Silver Engineering and Silver.

Please contact us for a quotation on e-mail:
info@silver-weibull.se



MANUFACTURING IN SWEDEN

In our premises in Hässleholm, in Skåne (South Sweden), we have our own R&D, production and testing facilities which ensures the highest quality of every delivery. For information regarding capacities or questions relating to integration into existing processes, please contact us.



AGENTS WORLDWIDE

In order to support and provide service to all our installations, we are working worldwide with selected dealers and service companies. The regular maintenance and service of our equipment is key to a reliable factory process. Silver Weibull also refurbishes older versions of Batch and Continuous centrifuges. We can replace and repair worn or broken equipment, control panels and other electrical parts.



Silver Weibull Sweden AB • Industrigatan 15 • S-281 43 Hässleholm, Sweden

☎ +46 451 38 48 00 ✉ info@silver-weibull.se

www.silver-weibull.se