

BATCH CENTRIFUGAL

-excellent running, quality and stability

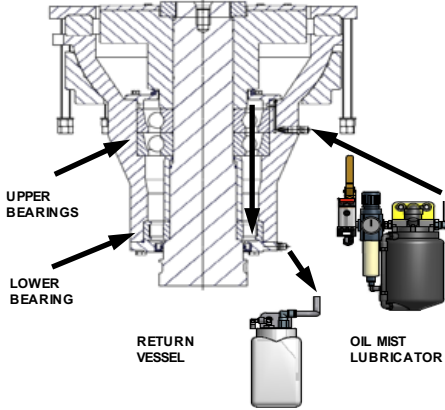


SILVER WEIBULL®

SKF OIL MIST LUBRICATED BEARING SYSTEM

Positive pressure inside the bearing housing provides:

- A cooling effect
- Effective lubrication
- Keeps dust and vapour out



ULTRASONIC CHARGE INDICATOR

- Measures exact amount of sugar in the basket.
- Optimizes the amount of wash water required
- No moving parts
- Easy setting of desired charge set-point
- Possible to visual actual charge thickness on the HMI



SUGAR WASH EQUIPMENT

- Optimum spray angle versus rotating sugar surface
- Overlapping spray nozzles
- Low pressure - minimum deflection against the sugar surface
- Short distance between wash pipe and sugar surface
- Possible to use various wash media water, thin juice, remelt
- Retractable wash pipe



ACCESSORIES

It's possible to equip SW batch centrifulgals with the following options:

- Syrup separation
- Additional wash media
- Wash of inlet & plough blade
- Sight glass in monitor casing
- Remote access
- Magnetic flowmeter to measure wash media consumption

FULLY AUTOMATIC CONTROL SYSTEM WITH TOUCH SCREEN

- Centrifugal operation, manual or automatic mode
- Parameter setting
- Language selection
- Battery sequency control
- Advanced fault tracing
- Centrifugal cycle monitoring
- Real time info:
 - Current
 - Vibration
 - Speed
 - Motor temp
 - Sugar layer thickness



SILVER WEIBULL DUAL TIP PLOUGH SYSTEM.COMPRESSED SUGAR CREATE “FALSE TIP”

- 100% Clean screen even at screen lock-lap joint
- Minimal screen wear due to non contact tip
- Rigid discharger design
- Minimal horizontal forces due to compact plough blade
- Vertical plough movement in shaft direction to force out sugar

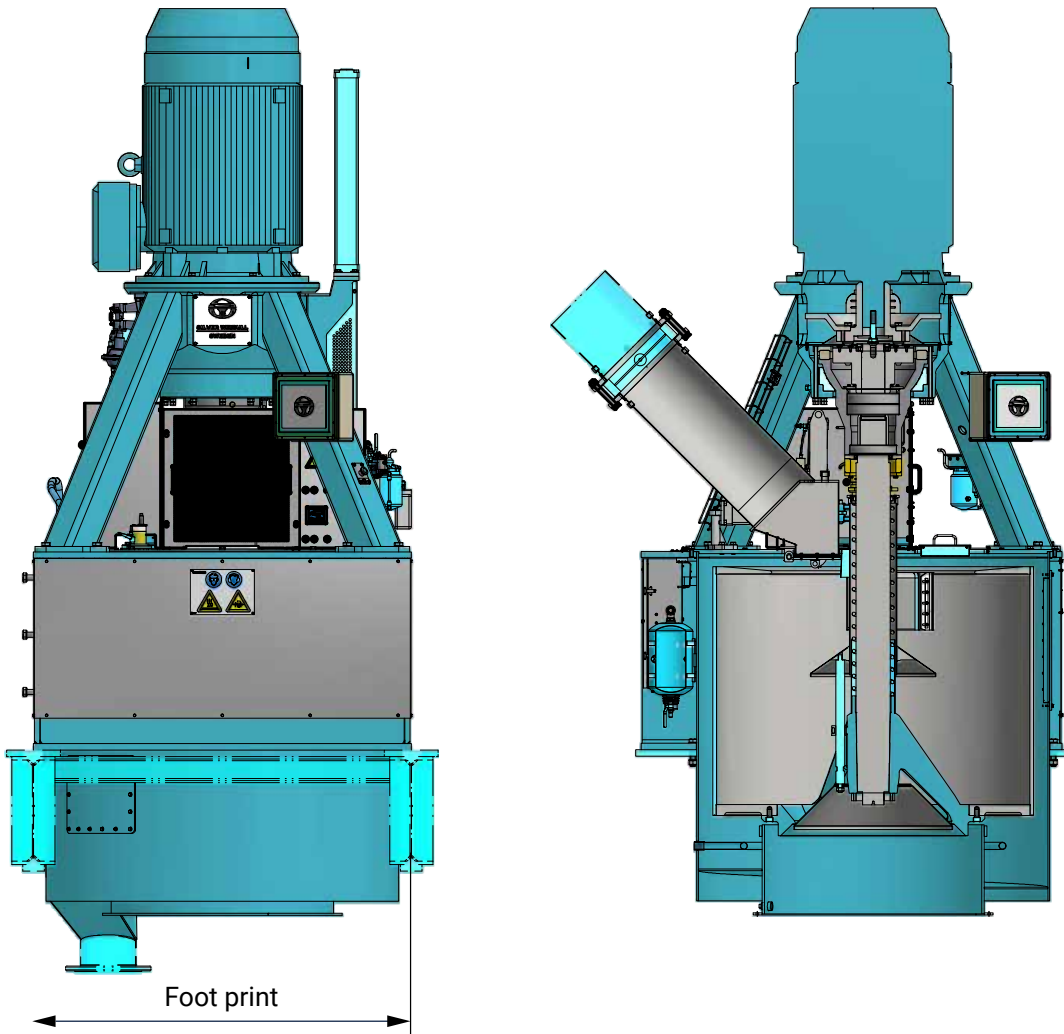


STRAIGHT WALL BASKET IN DUPLEX STAINLESS STEEL (EN 1.4462)

- Holes distributed evenly over the surface for integrity and efficiency
- Maximum distance between holes is 4cm providing optimal drainage
- Highest stability, height/diameter ratio 0,65<H/D<0,80

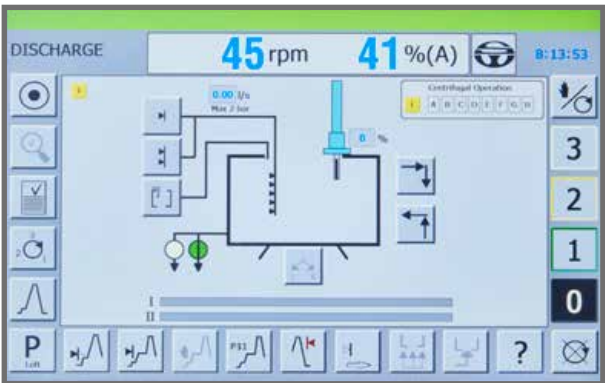
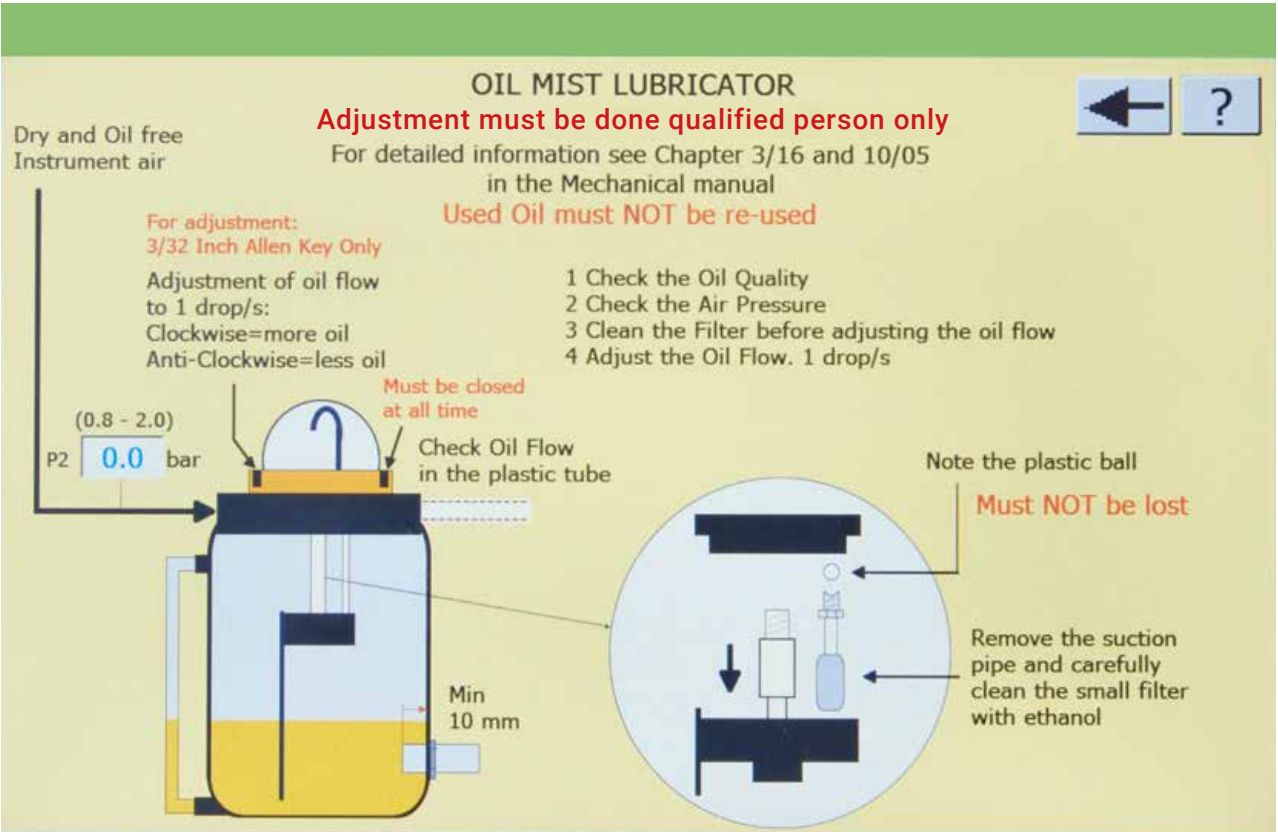


MODELS



CAPACITY

Model	Foot print mm	Max speed rpm	Geometric charge (kg)	Practical charge (kg)	Cycles/hour	Metric ton/hour
SW-850/E	1750 1800 1829	1250	850	935	22/25/28	19/21/24
SW-1250/E	1750 1800 1829	1250	1250	1375	22/25/28	28/31/35
SW-1500/E	1750 1800 1829	1150	1500	1650	22/25/28	33/38/42
SW-1750/E	2032 2100	1050	1750	1925	22/25/28	39/44/49
SW-2000/E	2032 2100	1050	2000	2200	22/25/28	44/50/56
SW-2250/E	2300	960	2250	2475	22/25/28	50/56/63



USER FRIENDLY INTERFACE

- Maintenance instructions on the HMI

Operational screens

- Charging, Spinning and Discharging:
- Process and all functions

Real time information

- Current, vibration, speed, motor temperatur





Silver Weibull is certified according to the quality management system ISO9001 and to the environment management system ISO14001. The system is implemented in our daily business in order to maintain a high quality level, to minimize our waste and environmental impact.

REFURBISHMENT OLD TRADE NAMES

Silver Weibull also refurbishes older versions of Batch and Continuous centrifuges.

We can replace and repair worn or broken equipment, control panels and other electrical parts for old trade names as ASEA, ASEA-Landsverk, ASEA-Weibull, Nils-Weibull, Silver Engineering and Silver.

Please contact us for a quotation on e-mail:
info@silver-weibull.se



MANUFACTURING IN SWEDEN

In our premises in Hässleholm, in Skåne (South Sweden), we have our own R&D, production and testing facilities which ensures the highest quality of every delivery. For information regarding capacities or questions relating to integration into existing processes, please contact us.



AGENTS WORLDWIDE

In order to support and provide service to all our installations, we are working worldwide with selected dealers and service companies. The regular maintenance and service of our equipment is key to a reliable factory process. Silver Weibull also refurbishes older versions of Batch and Continuous centrifuges. We can replace and repair worn or broken equipment, control panels and other electrical parts.



Silver Weibull Sweden AB • Industrigatan 15 • S-281 43 Hässleholm, Sweden

+46 451 38 48 00 info@silver-weibull.se

www.silver-weibull.se